

CONRAD<sup>®</sup>

FORT LAUDERDALE BEACH

# Emergency Response Manual

Revised on January 2024

Manual created by: Eric Remonvil, CLSD – Director of Safety and Security

For Catering and Events Only

This Emergency Response Manual is for the informational use of all guests of the Conrad Fort Lauderdale Beach. This document is available upon request through the Catering/Event Manager. If you should require any clarification, please contact the Catering/Event Manager or the Director of Safety and Security.

Because of the complexity, changing variables, and the situation at hand, this manual is to be used as a guideline only during an incident.

In the event of any inconsistency or conflict between a provision contained in these guidelines and any federal, state statute, regulation, order, or other law, such law will supersede the conflicting or inconsistent provision(s) of these guidelines.

Any suggested additions, deletions, or changes should be addressed to:

Eric Remonvil, CLSD

Director of Safety & Security, Conrad Fort Lauderdale Beach

551 North Fort Lauderdale Beach Boulevard

Fort Lauderdale, Florida 33304

Email: [Eric.remonvil@conradhotels.com](mailto:Eric.remonvil@conradhotels.com)

Office: 954-414-5188

### **Emergency Response Plan**

The Emergency Response Plan is designed and to be utilized at the following property:

Conrad Fort Lauderdale  
551 North Fort Lauderdale Beach Boulevard  
Fort Lauderdale, Florida 33304

This plan is designed to promote and provide a structured and efficient response to potential incidents or emergencies and to create an environment for our residents, which is as safe as reasonably possible.

This property will rely mainly upon the Security and Engineering teams, to respond to every emergency that occurs on the resort. In addition, to those departments, other individuals have been trained to assist in emergency situations.

## Emergency Evacuation Assembly Point

In the event of an emergency evacuation; we have established an assembly point for residents, guests and team members. Location of evacuation assembly point:

**Terramar Street and A1A, across the street (on the beach)**



### **Fire Alarm System**

The resort is equipped with a fire sprinkler system and smoke alarms. The fire alarms system is both visual and audible. In the event of an alarm activation, you will be instructed by an automated voice to evacuate the building.

### **Automated External Defibrillators (AED)**

The resort is equipped with AEDs which can be located at the following locations:

- Lobby (near the concierge)
- 3<sup>rd</sup> Floor meeting space (near the elevator)
- Fitness Center

### **Signs and Written Information Transmission**

Throughout the resort, there are signs posted in critical areas, advising persons of emergency procedures and restrictions. Included in this program are:

- Warning signs on every elevator landing (In case of fire, use stairwells. Do not use elevators)
- Signs in the suites, advising of alarm and evacuation procedures;
- Floor numbering signs in each stairwell, to advise those using the stairwell of their relative elevation in the building.

### **Emergency Safety Advice**

- Take the time to find the exits and count the number of doors between your room and the exit. Make sure the exits are unlocked. If they are locked, report it to management right away.
- If the alarm sounds, leave right away, closing all doors behind you. Use the stairs — never use elevators during a fire.
- If you must escape through smoke, get low and go under the smoke to your exit.

If you cannot escape:

- Shut off fans and air conditioners.
- Stuff wet towels in the crack around the doors.
- Call the fire department and let them know your location.
- Wait at the window and signal with a flashlight or light colored cloth.

**In the event of a fire, please call 911 or Security at extension 5186**

## **Hurricane Plan**

These guidelines outline the steps that must be taken prior to, during, and after hurricanes, typhoons, and cyclones.

Our resort has established this plan to ensure all residents, guests and team members are familiar with the current global safety & security guidelines.

"Hurricane Season" begins on June 1 and ends on November 30, although hurricanes can, and have, occurred outside of this time frame. NOAA's National Hurricane Center predicts and tracks these massive storm systems, which occur, on average, 12 times a year in the Atlantic basin.

### **Storm Level Guidance**

The below are descriptions of the notifications issued during a storm. Hilton Worldwide has provided guidance based on the storm level.

#### **HURRICANE STORM ALERT**

Local authorities have issued an alert that a hurricane may affect the area. Although the storm may change course, basic preparations and communication must occur. This level is typically 48 hours prior to landfall.

#### **HURRICANE WARNING – NO EVACUATION ORDER**

Local authorities have issued a warning that will affect the area. The storm is projected to affect the area. This level is typically 24-48 hours prior to landfall. Local authorities have NOT issued a mandatory evacuation.

#### **HURRICANE WARNING – MANDATORY EVACUATION**

Local authorities have issued a warning that has prompted a mandatory evacuation order, due to the predicted severity of the storm. This level is typically 24-48 hours prior to landfall. Local authorities have NOT issued a mandatory evacuation.

#### **POST STORM**

Local authorities have removed all storm alerts for the area. The hotel should implement all post storm assessment and recovery efforts.

### **Hurricane Categories**

One: Sustained winds of 74 - 95 mph. (4-5 ft.)

Two: Sustained winds of 96 - 110 mph. (6-8 ft.)

Three: Sustained winds of 111 - 130 mph. (9-12 ft.)

Four: Sustained winds 131 - 154 mph. (13-18 ft.)

Five: Sustained winds 155 mph. and greater. (greater than 18 ft.)

Storm Surge: The dome of water that builds up as a hurricane moves over water. As this water comes ashore with the storm, it causes flooding that is usually a hurricane's biggest killer.

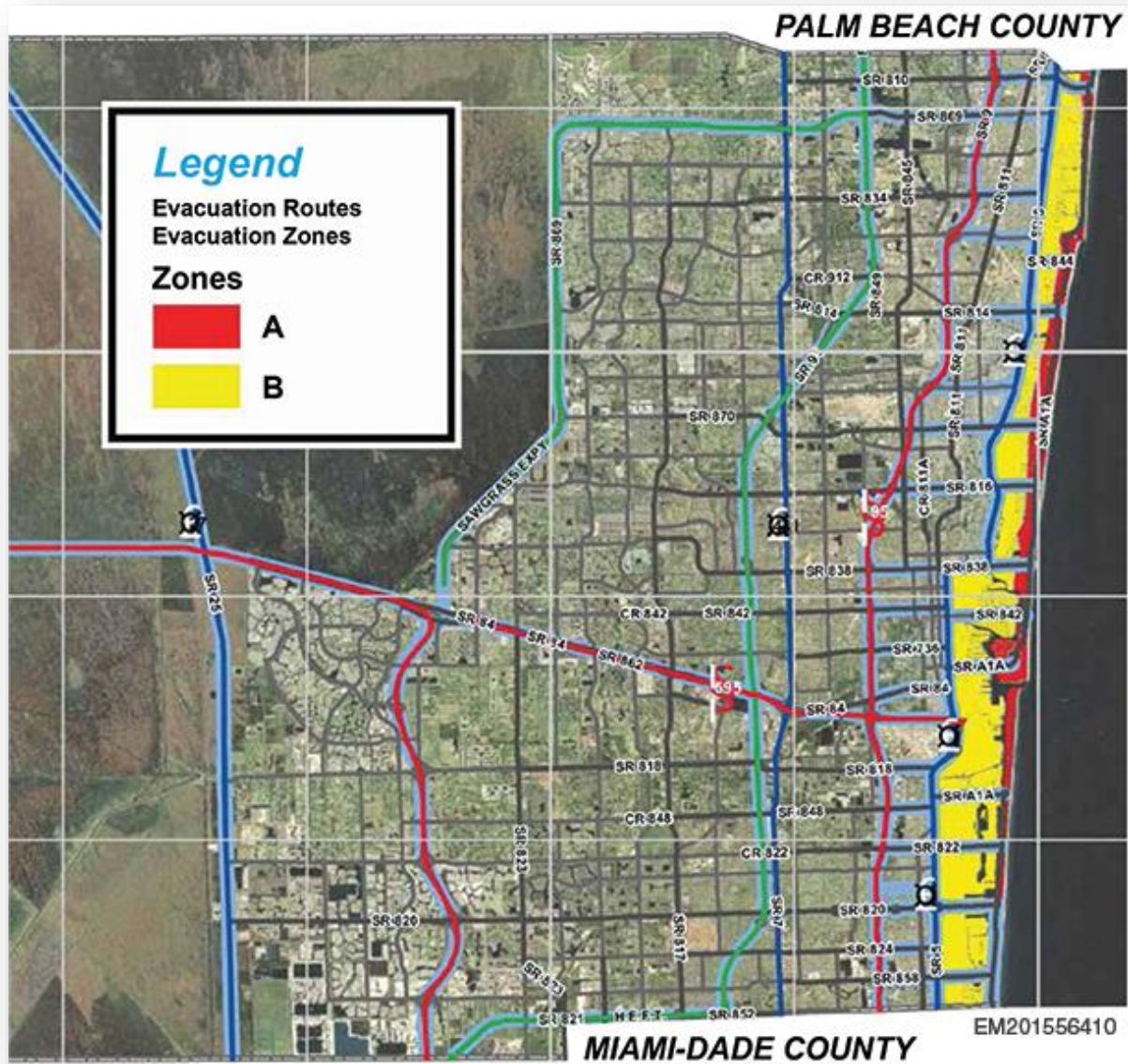
### **Broward County Evacuation Zones**

**Evacuation Plan A-** All residents east of the Intracoastal Waterway, mobile home residents, residents beside tidal bodies of water and in low lying areas should evacuate.

**Evacuation Plan B-** All residents east of U.S. 1 (Federal Highway), mobile home residents, residents beside tidal bodies of water and in low lying areas should evacuate.

**Our resort is located in Evacuation Plan A.**

If a mandatory evacuation is ordered by emergency operations leaders of Broward County, then the hotel shall comply with such order. Broward County is responsible for establishing shelters in the event of a threatening storm. Please note that shelters provide basic needs only and should be a choice of last resort.



**Security Staff**

Security is on site 7 days a week and 24 hours a day and located in an office equipped with CCTV that covers certain areas of the property. For any questions or concerns, please contact at 954-414-5186.